

SureCrimp® Aluminum Compression Lugs

Narrow Tang, 1 Hole, w/o Sight Hole

Conductor Range: 1000kcmil - #4

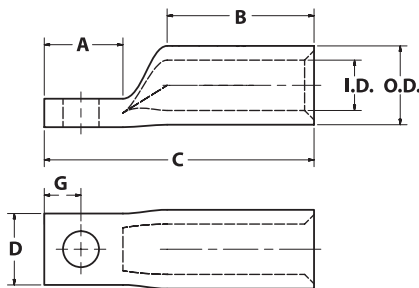
TYPE ALNN

Features

- Manufactured from high strength aluminum alloy
- Electro-Tin plated
- Chamfered entry
- Color coded end cap
- Roll marked
- Pre-filled with DE-OX® oxide inhibiting compound
- Range taking
- Narrow Tang
- Suitable for use in circuits rated 35KV or less, proper high voltage spacing and insulation techniques must be used
- Dual rated AL9CU to 90° C

Benefits

- Offers maximum conductivity and excellent crimping characteristics
- Provides low contact resistance
- For easy conductor insertion
- Identifies the proper compression die
- For easy identification and proper location of crimps
- Prevents oxides from forming
- Permits inventories to be kept to a minimum
- Side by side mounting
- Application versatility
- For use with copper or aluminum conductor



Catalog Number	Wire Size	Expanded Wire Range*	Bolt Size	Stud Hole Dia.	Dimensions - in (mm)						Die Color Code	Die Index	
					A	B	C	D	G	O.D.			I.D.
ALNN-4-14	#4 AWG	4-6 AWG	1/4	0.281 (7.1)	0.875 (22.2)	0.920 (23.4)	2.029 (51.5)	0.412 (10.5)	0.321 (8.2)	0.427 (10.8)	0.247 (6.3)	Green	375
ALNN-2-14	#2 AWG	2-6 AWG	1/4	0.281 (7.1)	0.875 (22.2)	0.970 (24.6)	2.131 (54.1)	0.495 (12.6)	0.321 (8.2)	0.525 (13.3)	0.307 (7.8)	Pink	348
ALNN-1-14	#1 AWG	1-2 AWG	1/4	0.281 (7.1)	1.687 (42.8)	0.970 (24.6)	2.175 (55.2)	0.514 (13.1)	0.321 (8.2)	0.544 (13.8)	0.358 (9.1)	Gold	471
ALNN-1-516	#1 AWG	1-2 AWG	5/16	0.343 (8.7)	0.875 (22.2)	0.970 (24.6)	2.175 (55.2)	0.514 (13.1)	0.353 (9.0)	0.544 (13.8)	0.358 (9.1)	Gold	471
ALNN-1/0-516	#1/0 AWG	1/0-1 AWG	5/16	0.343 (8.7)	0.875 (22.2)	1.070 (27.2)	2.301 (58.4)	0.569 (14.5)	0.353 (9.0)	0.599 (15.2)	0.385 (9.8)	Tan	296
ALNN-2/0-38	#2/0 AWG	2/0-1 AWG	3/8	0.406 (10.3)	0.875 (22.2)	1.355 (34.4)	2.626 (66.7)	0.644 (16.4)	0.414 (10.5)	0.674 (17.1)	0.432 (11.0)	Olive	297
ALNN-3/0-38	#3/0 AWG	3/0-1 AWG	3/8	0.406 (10.3)	0.875 (22.2)	1.355 (34.4)	2.669 (67.8)	0.731 (18.6)	0.414 (10.5)	0.761 (19.3)	0.495 (12.6)	Ruby	467
ALNN-3/0-12	#3/0 AWG	3/0-1 AWG	1/2	0.562 (14.3)	1.250 (31.8)	1.355 (34.4)	3.044 (77.3)	0.731 (18.6)	0.546 (13.9)	0.761 (19.3)	0.495 (12.6)	Ruby	467
ALNN-4/0-38	#4/0 AWG	4/0-1 AWG	3/8	0.406 (10.3)	0.875 (22.2)	1.535 (39.0)	2.901 (73.7)	0.824 (20.9)	0.414 (10.5)	0.854 (21.7)	0.553 (14.0)	White	298
ALNN-4/0-12	#4/0 AWG	4/0-1 AWG	1/2	0.562 (14.3)	1.250 (31.8)	1.535 (39.0)	3.276 (83.2)	0.824 (20.9)	0.546 (13.9)	0.854 (21.7)	0.553 (14.0)	White	298
ALNN-250-38	250kcmil	250kcmil-1/0 AWG	3/8	0.406 (10.3)	0.875 (22.2)	1.535 (39.0)	2.941 (74.7)	0.894 (22.7)	0.414 (10.5)	0.924 (23.5)	0.595 (15.1)	Red	324
ALNN-250-12	250kcmil	250kcmil-1/0 AWG	1/2	0.562 (14.3)	1.250 (31.8)	1.535 (39.0)	3.316 (84.2)	0.894 (22.7)	0.546 (13.9)	0.924 (23.5)	0.595 (15.1)	Red	324
ALNN-300-38	300kcmil	300kcmil-2/0 AWG	3/8	0.406 (10.3)	0.875 (22.2)	1.535 (39.0)	2.997 (76.1)	0.980 (24.9)	0.414 (10.5)	1.010 (25.7)	0.650 (16.5)	Blue	470
ALNN-300-12	300kcmil	300kcmil-2/0 AWG	1/2	0.562 (14.3)	1.250 (31.8)	1.535 (39.0)	3.372 (85.6)	0.980 (24.9)	0.546 (13.9)	1.010 (25.7)	0.650 (16.5)	Blue	470
ALNN-350-12	350kcmil	350kcmil-3/0 AWG	1/2	0.562 (14.3)	1.250 (31.8)	2.353 (59.8)	4.226 (107.3)	1.075 (27.3)	0.546 (13.9)	1.105 (28.1)	0.720 (18.3)	Brown	299
ALNN-400-12	400kcmil	400kcmil-4/0 AWG	1/2	0.562 (14.3)	1.250 (31.8)	2.303 (58.5)	4.220 (107.2)	1.158 (29.4)	0.546 (13.9)	1.188 (30.2)	0.762 (19.4)	Green	472
ALNN-400-58	400kcmil	400kcmil-4/0 AWG	5/8	0.656 (16.7)	1.437 (36.5)	2.303 (58.5)	4.407 (111.9)	1.158 (29.4)	0.671 (17.0)	1.188 (30.2)	0.762 (19.4)	Green	472
ALNN-500-12	500kcmil	500kcmil-5/0 AWG	1/2	0.562 (14.3)	1.250 (31.8)	2.565 (65.2)	4.547 (115.5)	1.285 (32.6)	0.546 (13.9)	1.315 (33.4)	0.854 (21.7)	Pink	300
ALNN-500-58	500kcmil	500kcmil-5/0 AWG	5/8	0.656 (16.7)	1.437 (36.5)	2.565 (65.2)	4.734 (120.2)	1.285 (32.6)	0.671 (17.0)	1.315 (33.4)	0.854 (21.7)	Pink	300
ALNN-600-12	600kcmil	600kcmil-250kcmil	1/2	0.562 (14.3)	1.250 (31.8)	2.685 (68.2)	4.744 (120.5)	1.410 (35.8)	0.546 (13.9)	1.440 (36.6)	0.920 (23.4)	Black	473
ALNN-600-58	600kcmil	600kcmil-250kcmil	5/8	0.656 (16.7)	1.437 (36.5)	2.685 (68.2)	4.931 (125.2)	1.410 (35.8)	0.671 (17.0)	1.440 (36.6)	0.920 (23.4)	Black	473
ALNN-700/750-12	700/750kcmil	750kcmil-500kcmil	1/2	0.562 (14.3)	1.250 (31.8)	2.964 (75.3)	5.116 (129.9)	1.430 (36.3)	0.546 (13.9)	1.460 (37.1)	1.030 (26.2)	Yellow	936
ALNN-700/750-58	700/750kcmil	750kcmil-500kcmil	5/8	0.656 (16.7)	1.437 (36.5)	2.964 (75.3)	5.303 (134.7)	1.430 (36.3)	0.671 (17.0)	1.460 (37.1)	1.030 (26.2)	Yellow	936
ALNN-1000-12	1000kcmil	1000kcmil-750kcmil	1/2	0.562 (14.3)	1.250 (31.8)	2.996 (76.1)	5.271 (133.9)	1.578 (40.1)	0.546 (13.9)	1.840 (46.7)	1.180 (30.0)	Brown	P302
ALNN-1000-58	1000kcmil	1000kcmil-750kcmil	5/8	0.656 (16.7)	1.437 (36.5)	2.996 (76.1)	5.458 (138.6)	1.578 (40.1)	0.671 (17.0)	1.840 (46.7)	1.180 (30.0)	Brown	P302

For Tool and Die Information Refer to Tooling Information Page Series: ALNS, ALND, ALNN, ASN

* When installed with specified dieless tools

Tested to UL 486A/B, UL File E6207